

## Bourdon Spring Pressure Gauge YTN-Series Liquid Filled Pressure Gauge

YTN-Series liquid filled pressure gauge fill damping fluid(silicone oil, glycerol) in the gauge and other measures to ensure that it has excellent function of impact resistance and aseismatic. So it is safe and reliable, with stable performance and long useful-life. It is apply to mechanical, Chemical, metallurgy, mine, Electrical, Measure the pressure of medium is non corrosive for copper and alday. If measure the pressure of high corrosive medium, all material of pressure gauge must be stainless steel.



Diameter	Model	Installation	Range (Mpa)	Thread	Casing Material	Accuracy
1 1/2"	YTN-40	Bottom connection	0.1 0.16 0.25 0.4, 0.6 1, 1.6 2.5, 4, 6	G1/8" ZG1/8" Z1/8" M10×1	SS 304	±2.5
	YTN-40Z	Back connection				
	YTN-40ZT	Back connection with border				
2"	YTN-50	Bottom connection	0.1 0.16 0.25 0.4, 0.6 1, 1.6 2.5, 4 6, 10 16, 25 40	G1/8" G1/4" ZG1/8" ZG1/4" Z1/8" Z1/4" M14×1.5	SS 304	±2.5
	YTN-50Z	Back connection				
	YTN-50ZT	Back connection with border				
2 1/2"	YTN-60	Bottom connection	0.1 0.16 0.25 0.4, 0.6 1, 1.6 2.5, 4 6, 10 16, 25 40, 60	G1/8" G1/4" ZG1/8" ZG1/4" Z1/8" Z1/4" M14×1.5	SS 304	±2.5
	YTN-60Z	Back connection				
	YTN-60ZT	Back connection with border				

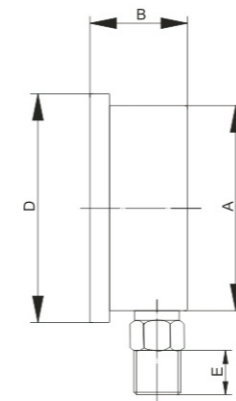
Measurement Conversion : 1Mpa=10bar=10.2kg/cm<sup>2</sup>=145psi  
 Note: G=BSP ZG=BSPT Z=NPT

### For Order

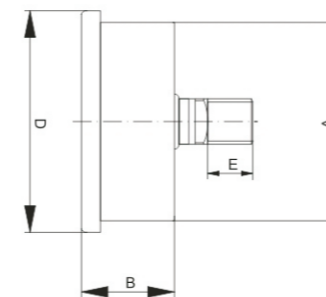
Please specify the model, specification and code

Diameter	Installation	Measure range	Case material	Fitting material	Thread	Module	Spring pipe
<input type="text"/>	<input type="text"/>	<input type="text"/>	<input type="text"/>	<input type="text"/>	<input type="text"/>	<input type="text"/>	<input type="text"/>
1-1 1/2"	1-Bottom connection		1-Steel	√1-Brass	1-NPT	√1-Brass	√1-Phosphor copper
2-2"	2-Back connection		2-Plastic	2-SS	2-BSPT	2-SS	2-SS
3-2 1/2"	3-Back connection with border		√3-SS304		3-BSP		
4-3"							
5-4"							

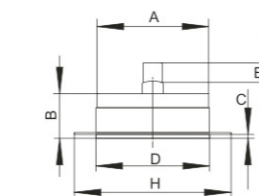
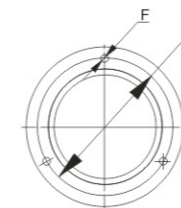
## Bourdon Spring Pressure Gauge YTN-Series Liquid Filled Pressure Gauge



Bottom connection



Back connection



Back connection with border

Diameter	Model	Installation	Range (Mpa)	Thread	Casing Material	Accuracy
3"	YTN-75	Bottom connection	0.1 0.16 0.25 0.4, 0.6 1, 1.6 2.5, 4 6, 10 16, 25 40, 60	G1/8" G1/4" ZG1/8" ZG1/4" Z1/8" Z1/4" M14×1.5	SS 304	±2.5
	YTN-75Z	Back connection				
	YTN-75ZT	Back connection with border				
4"	YTN-100	Bottom connection	0.1 0.16 0.25 0.4, 0.6 1, 1.6 2.5, 4 6, 10 16, 25 40, 60	G1/2" ZG1/2" G3/8" ZG3/8" Z1/2" Z3/8" M20×1.5	SS 304	±1.6
	YTN-100Z	Back connection				
	YTN-100ZT	Back connection with border				

### Installation Specification(mm)

Model	40	50	63	75	100
<b>A</b>	Φ42	Φ52	Φ61	Φ75	Φ98
<b>B</b>	26	29	31	31	37
<b>C</b>	3	3	3	3	3
<b>D</b>	Φ47	Φ58	Φ68	Φ82	Φ109
<b>E</b>	11	14	14	14	17
<b>F</b>	3-Φ3.5	3-Φ4	3-Φ5	3-Φ5	3-Φ4
<b>G</b>	Φ52	Φ64	Φ78	Φ91	Φ115
<b>H</b>	Φ62	Φ73	Φ88	Φ105	Φ130

Measurement Conversion : 1Mpa=10bar=10.2kg/cm<sup>2</sup>=145psi  
 Note: G=BSP ZG=BSPT Z=NPT

### Working Condition of Liquid Filled Pressure Gauge

- 1) Ambient Temp: -5°C~+55°C;
- 2) Working pressure is 1/3~3/4 Max: static pressure or 1/3~2/3 Max: dynamic liquid pressure;
- 3) Relative Humidity ≤ 80%;
- 4) Working Vibration Frequency ≤ 25Hz; media amplitude ≤ 1mm;
- 5) It is required to mount the device vertically. It's forbidden to turn the device casing with hands during mounting or demounting operation.